


**Sonoma
Water**





Russian River County
Sanitation District
Infrastructure, Budget, and Rates
Lower Russian River Municipal
Advisory Council Meeting
February 17, 2022

Lynne Rosselli
Administrative Services Division Manager

David Royall
Operations and Maintenance Manager

Kent Gylfe
Deputy Chief Engineer




    sonomawater.ca.gov


1

Russian River County Sanitation District

Infrastructure, Budget, and Rates



- Brief Overview of the District - Operations & Maintenance and Infrastructure Projects
- FY2022-2023 Proposed Projects and Budget
- FY2022-2023 Proposed Rates
- Public Outreach and Education
- Questions



2

Russian River County Sanitation District



- Service area of 2,700 acres
- Plant became operational 1983
- Sonoma Water took over operations & maintenance in 1995
- Designed to treat an average dry weather flow of up to 0.71 million gallons per day to advanced (tertiary) wastewater treatment standards



3

45.4 Miles of Collection System

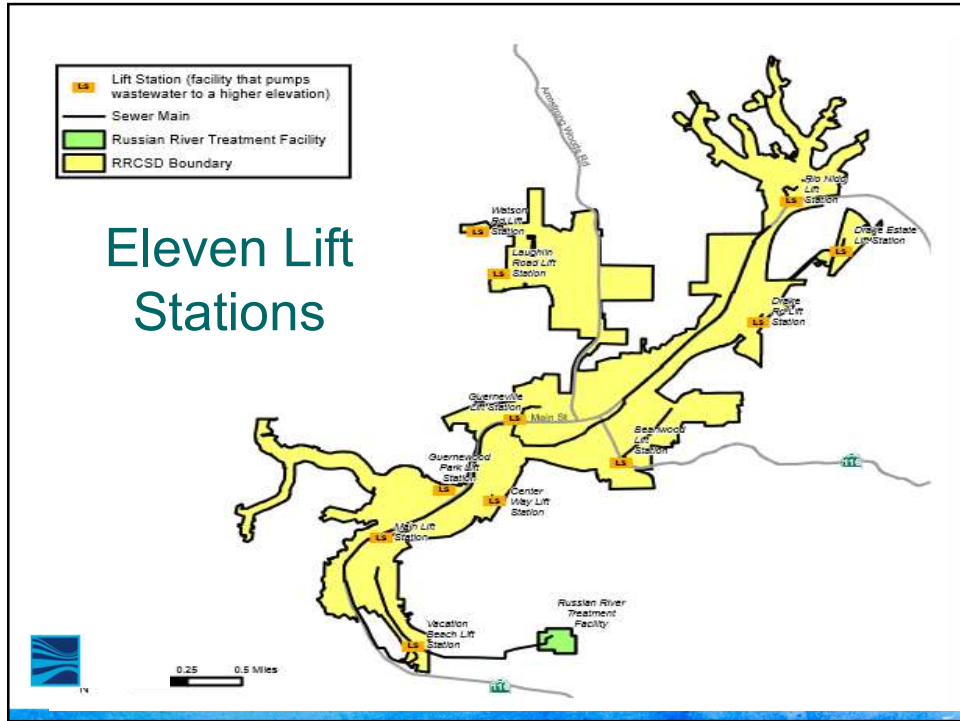


Completed a Sanitary
Sewer Capacity
Assessment, and
Computer Model of
Collection System

More than 60,000 Linear Feet Cleaned Annually;
CCTV Video Inspections Conducted Annually to Inform
Maintenance Needs



4

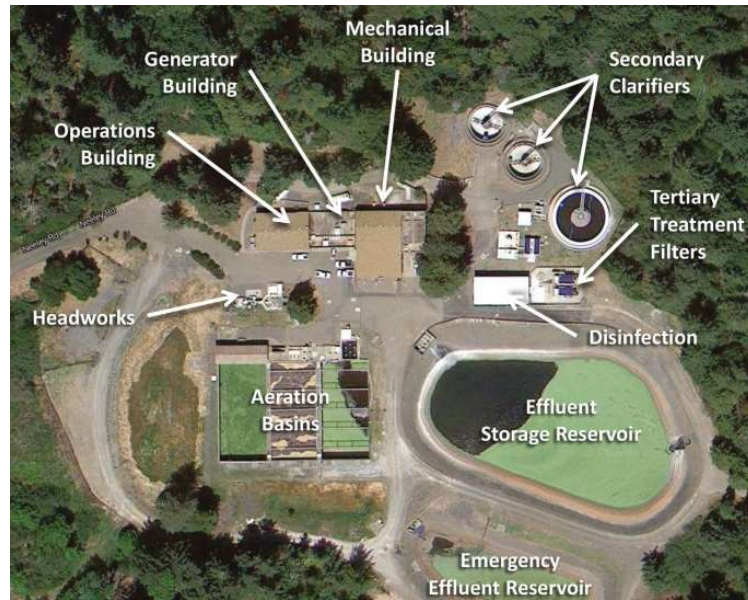


5



6

Russian River County Sanitation District



7

2004 Upgrade: Third Unit Processes

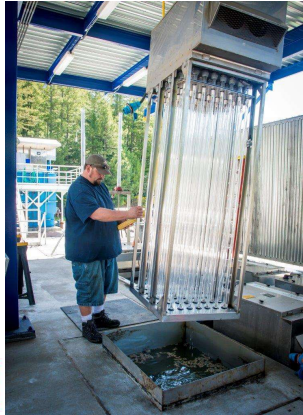
Aeration Basin, Secondary Clarifier, and a Replacement Tertiary Filtration System (\$4.2M State Loan through 2024)



8

2011 Upgrade: Ultra Violet (UV) Disinfection System

\$3.9M with \$1.9M in state loan forgiveness,
\$2M interest free state loan through 2032



9

2014 Upgrade: Two Extended Aeration Biological Nutrient Removal Activated Sludge Basins (\$2.8M)



to reduce nitrogen and
phosphorus based
nutrient discharges to
the Russian River

10

Three Secondary Clarifiers 2022 Seismic Retrofits

\$3.1M with \$2.28M FEMA Grant



The image block contains three photographs of secondary clarifiers. The top-left photo is a close-up of a central column with a metal walkway and railings. The top-right photo shows a clarifier with a blue floating cover on the water surface. The bottom photo is a wide-angle view of a circular clarifier with a concrete walkway and metal railings around the perimeter.

11

Two Holding Ponds: 4.5-Million Gallon Storage Capacity

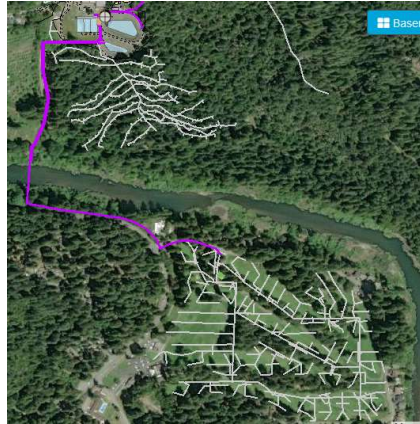


The image block contains two photographs of holding ponds. The left photo shows a pond with a fountain spraying water, surrounded by a grassy area and trees. The right photo shows a pond with a building in the background and a forested area.

12

Irrigation System

16,500 Feet of Irrigation Piping
Between May 15 and September 30,
treated wastewater irrigates forests outside the plant
and on 43 acres at Northwood Golf Course: \$680,000



13

FY2022-2023 Proposed Projects

Force Main, Headworks, and Lift Station Upgrade
10 Years \$8M+ with Offsetting State Grant



14

FY2022-2023 Proposed Projects

Lift Station Electrical Resiliency Project (Vacation Beach) and Electrical Service Replacement (3 Lift Stations) – 6 Years, \$6M

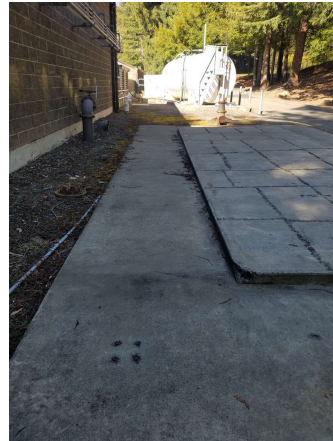


15

FY2022-2023 Proposed Projects

**UV System Retrofit
4 Years \$1.3M**

**Main Lift Underground
Diesel Tank Replacement
3 Years \$1M**

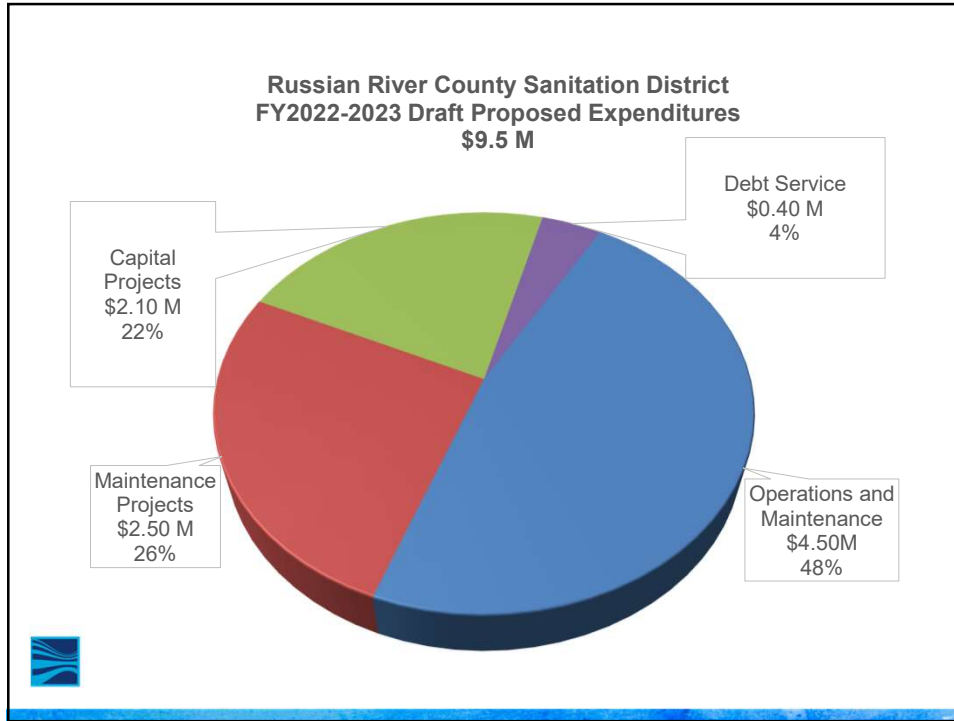


Plans: \$750,000

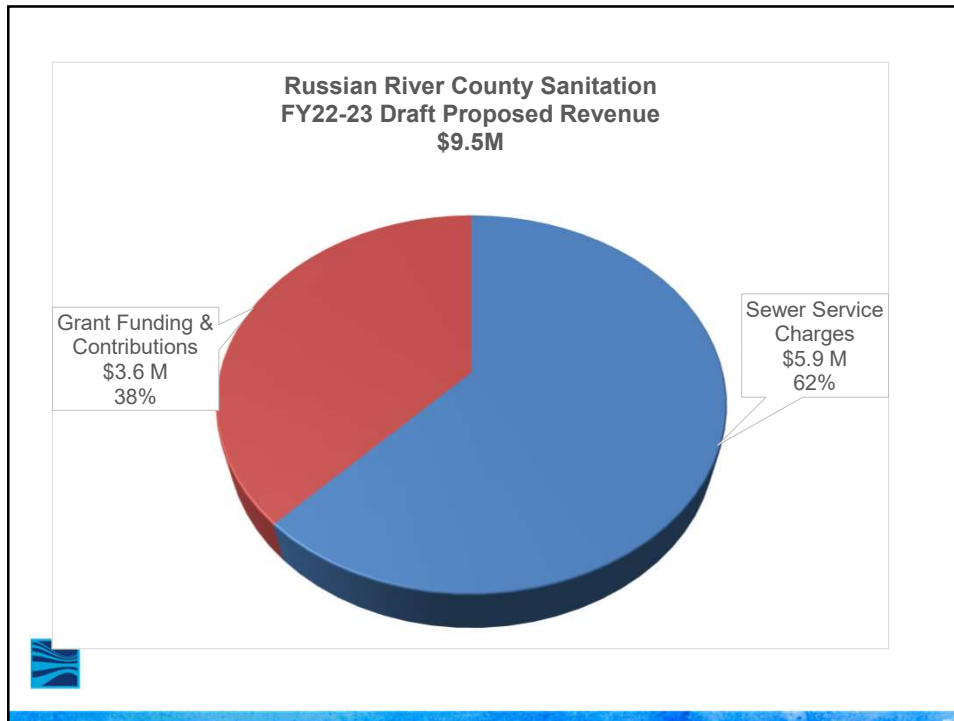
- Local Hazard Mitigation Plan Update
- Treatment Plant Master Plan



16



17



18

FY 2022/2023 Proposed Rate Increase

Russian River County Sanitation District

	ESDs	Annual Rate Per ESD	Annual Increase per ESD	Monthly Rate per ESD	Monthly Increase per ESD	Rate Increase	Revenue Increase
FY 21-22	3,214	\$1,774	\$68	\$148	\$5.7	4.00%	218,552
Draft Proposed FY 22-23	3,214	\$1,932	\$158	\$161	\$13.2	8.90%	534,812

Notes:

ESD = Equivalent Single Family Dwelling

Number of Parcels in the District: 2,500

Estimated District Population: 7,300

4.8% Average Rate Increase Over 10 Years



19

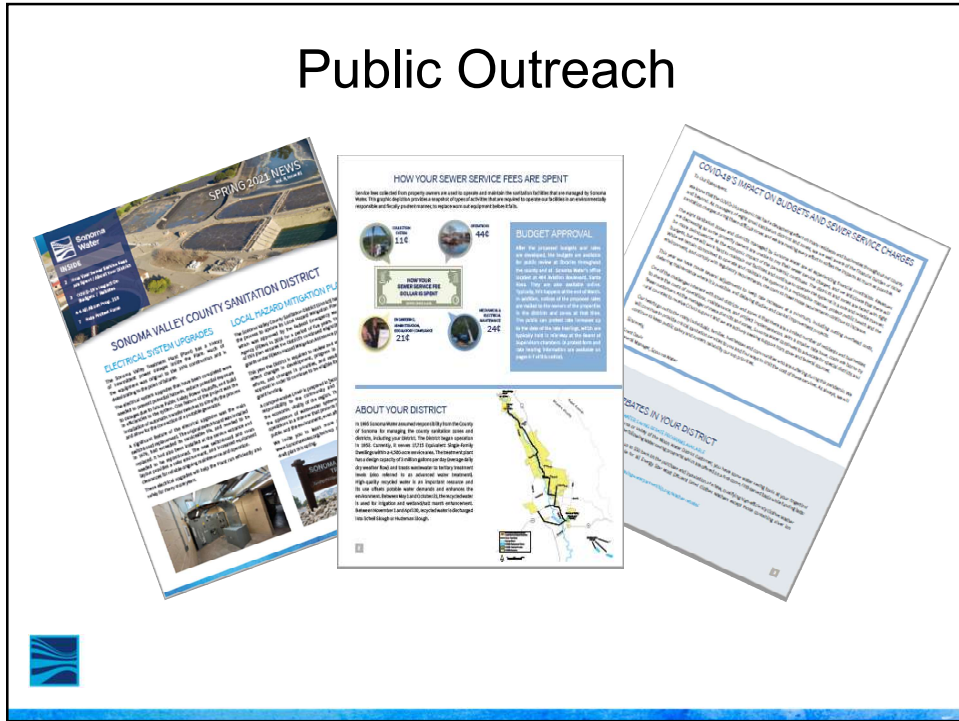
Public Outreach

- Tours of sanitation facilities on hold due to Pandemic
- Annual Prop. 218 Newsletters



20

Public Outreach



21



22

Water Use Efficiency Rebates



www.sonomawater.org/rccsd

23



**Sonoma
Water**

Kent Gylfe
Deputy Chief Engineer

David Royall
Operations and Maintenance Manager

Lynne Rosselli
Administrative Services Division Manager

 sonomawater.ca.gov

24